

Insight

Serving The Roofing Industry

March / April 2020
Issue 14

LOCAL HERO

BRANCH
MAKEOVER
MAGIC
TIMBER TIPS

VENTING
YOUR RIDGE
LONDON
LANDMARK
GUTTERING



THE ROOFING
AWARDS
2020
HOSTED BY NFRG

UK Roofing
Awards
Special



Top
growth

Twelve degrees

GREEN & BLUE CHOICES

As well as great design and product quality, BMI UK & Ireland's new Green and Blue 'Active Roof Systems' give you ease of installation, great configuration options, market-leading technical support and highly competitive prices.

BMI Canopia is a range of four standard systems and the product and planting choices deliver a huge number of roof permutations.

The new Blue Roof system controls water flows from roofs and limits flooding during heavy rainfall. A water attenuation board with a permeable top layer can also be a Green Roof to increase roof attenuation, while outlets restrict water flow rate from the roof to greenfield levels.



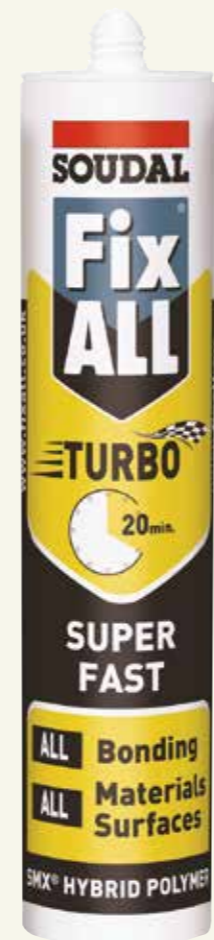
Pot the difference

W T Knowles & Sons Limited has added to its extensive DFE Chimney pot range with 2 new DFE chimney pots.

- 330mm Square base DFE pot - KYK10SQ
- 185mm Square Base DFE insert - KYK190SQF

Both fall under the category of Restricted Flue Terminals to BS EN 13502 - Type 1.

New images and drawings are now on their website together with Certification, Declarations of Performance and Installation Instructions, all available as downloads.



GIVE YOURSELF A TURBO BOOST!

Fix All Turbo gives you all the benefits of Fix All, but with even more speed. This high quality single component adhesive-sealant is based on SMX-Polymer with very fast strength build-up. You can use it in all conditions - even under water!

It'll fix common materials including bricks, blocks, timber, plastic, ceramics, glass, natural stone and many more. With the highest final bond strength, it is permanently fixed in just 20 minutes reaching peak bonding capacity after just 3 hours.

Now that's fast!



Lay low with Mendip

If you've got a single storey extension project in mind, then you want a tile you can use at extremely low pitches that still keeps water out. The new Mendip 12.5 has the same double pan design as the original, but includes innovative features meaning you can use it down to a minimum pitch of just 12.5°.

To make it as weatherproof as possible, four weatherproofing channels at the face of the tile prevent water ingress from driving rain. Each tile also comes with its own Mendip clip so there are no holes where water can get in.

For more information and samples, visit marley.co.uk/lowpitchmendip



TIMBER TIPS
Before installing battens, be sure to check you have the size and spacing right, as these can have a direct influence on the weather tightness of the roof, as well as the finished appearance.

BRIEFS

Tools galore

Look out for the new displays of tools in your local SIG Roofing branch. You'll find a comprehensive range of the tools you need for tiling, slating and flat roof work, all at great prices.

It's a rollover

From January, your Trade Club points are being carried over each month until they hit at least £25 worth of vouchers.

Join Trade Club today to start earning points from tomorrow on any purchases at your local SIG Roofing branch. Find out more at sigroofing.co.uk/tradecub.

STRESS NO MORE

Imperfections on the substrate are a liquid waterproofer's worst enemy. They cause alignment issues and stress points in the coating, with the associated risk of roof fails that brings. Liquiroof fully supported PIR insulation boards from EAP, help you avoid all that, creating a one ridged, super-flat surface to apply your liquid waterproof coating.

Liquiroof boards interlock on all 4 sides from top to bottom, delivering a strong and solid surface with no raised edges, misalignment or gaps. The serrated edges on the boards slot together easily to cover large uneven surfaces - and, with no time wasted aligning are quick to install and reduce the risk of roof failures.

SIG Design & Technology are working with EAP to exclusively supply LIQUIROOF, combining their expertise on both insulation and waterproofing under one package.

visit <http://bit.ly/LIQUIROOF>



For those that want a hand-made look, with all the benefits and cost-effectiveness of a machine-made clay tile, look no further than the new, improved Ashdowne clay handcrafted range from Marley.

Manufactured in the UK, the new Ashdowne tiles help contractors achieve a unique, hand-made look. Thanks to new processing technology the tiles are less uniform in shape, with subtle distressed edges and irregularities making them appear even more like a hand-made tile.

There is also a new colour, Ashdowne Weathered, to complement the existing range, giving properties an instant aged look.

For more information and free samples, visit marley.co.uk/ashdowne



@SIGRoofing
Keep an eye out for job opportunities with SIG across the country! Find out more and apply here: <http://ow.ly/eHLg50xR0dX>
#Jobs #Hiring #SIGRoofing

@RoofingToday
Why #Roofing is Looking Up in 2020. Richard Kendrick, Marketing Manager @SIGRoofing explains why the industry continues to provide fantastic business and employment opportunities <http://bit.ly/RoofingTodayJan20>

@SIGRoofing
We have been shortlisted in this year's, Homebuilding & Renovating Awards under the 'Best Roofing Supplier' category! 😊

Lothian at Lawnswood

Russell Roof Tiles recently teamed up with house builder, Cameron Homes, to help them with their biggest project to date.

The company supplied 150,000 of its Lothian pitched roof tiles in Slate Grey and Peat Brown for Cameron Homes' 70-home Lawnswood development in Staffordshire.

These high-quality tiles have the natural look of slate, stone and clay but the long-lasting benefits of concrete. The tiles are also designed to speed up installation, making the work much quicker and efficient.



The UK Roofing Awards

It's nearly upon us - one of the highlights of the roofing year, when contractors across the country are recognised for their outstanding standards of workmanship and safety at the UK Roofing Awards.

Organised by leading industry body the National Federation of Roofing Contractors (NFRC), the 2020 awards ceremony takes place on 1st May at the InterContinental London - The O2. The winners of each of the 19 categories will be announced during the afternoon event.

SIG Roofing has supported the prestigious UK Roofing Awards for 12 years, celebrating and endorsing the benchmark of quality that they represent. For 2020 we are building on our active role in the awards by becoming Knowledge Partner, as well as sponsoring two major categories, Local Hero and Roof of the Year.



Knowledge Partner

As Knowledge Partner, we will be hosting a morning knowledge session in the Riverside Suite covering key supply partners, RoofCert and showing customers how SIG Roofing support their business.

SIG Roofing will also be hosting the Twitter feed for the awards, ensuring that everyone is up to date with the latest news, as it happens. Follow @UKRoofingAwards and #SIGRoofingKnowledge to be in the know.

Throughout the day, award attendees will be able to access free wifi sponsored by SIG Roofing and see the latest tweets on a Twitter wall.

Roof of the Year Award, sponsored by



Representing the pinnacle of achievement, Roof of the Year is a category that can't be entered directly. The winner of this accolade is selected by the judging panel from among the other 2020 project winners, which cover the full spectrum of roofing disciplines.



Now in its third year, Local Hero has struck a chord with roofing contractors, suppliers and the public alike. It highlights and applauds the work of our unsung roofing heroes.

If you know of a roofing contractor who deserves to be recognised for their selfless acts to help others, then please let us know. Their 'heroic' work does not have to be roofing related - it could be for helping a charity, a worthy individual or group, a local community or community project.

Entries for this award are collected and judged by SIG Roofing. They can be submitted from 2 to 31 March 2020 and nominated companies must have 15 or fewer employees.

The entry form can be completed online and must include the nominee's details plus information on the work that they have done to make them eligible for the Local Hero Award.

**TO ENTER, VISIT
SIGROOFING.CO.UK/
LOCAL-HERO**

Meet two of last year's Local Hero runners up:

Ross Golder was nominated for his ongoing fundraising efforts for Kids For Life, a charity supporting children and young people living with cancer throughout the UK. Having first become involved with the charity just two years before, Ross had already raised a staggering £150,000. He also launched a company-funded 'concierge' scheme to help people donate blood.

Sean Davis' strong sense of community spirit, saw him deliver projects free-of-charge for vulnerable or elderly homeowners who had been taken advantage of by cowboy builders. In one case, Sean dropped everything to work on a time-sensitive project for a homeowner who had been drastically over-charged by a bogus builder for a shoddy job.



SEAN DAVIS

ROSS GOLDER



Judging the awards
The UK Roofing Awards judges are selected for their industry knowledge and expertise. After careful consideration of all the qualifying entries in each category, together with their supporting images, the judges draw up a shortlist of finalists based on the quality of the workmanship. Find out who they are
www.nfrc.co.uk/uk-roofing-awards

The awards are being judged in March to select the best entries for 2020. Finalists will be contacted shortly and invited to attend the event free with a partner.

Who can enter the awards?
Roofing contractors must be a member of at least one of the following associations/organisations in order to qualify for entry.
CompetentRoofers • FTMRC
GRO • LRWA • MAC • NFRC • SPRA





Our SIG Roofing branch refurbishment programme continues apace. Thirteen branches are now complete after a few weeks of building work to transform the interiors and freshen up the outside areas.

A further eight branches - Stratford, Derby, Blackpool, Kings Langley, Bristol Barton Hill, Rotherham and Telford - have received makeovers in recent weeks. They follow in the footsteps of Woking, Leatherhead, Tunbridge Wells, Milford and Eastbourne branches, which re-opened in 2019. Many thanks to everyone for their patience while the building works were in progress.

At all newly refurbished branches we are holding open days to celebrate the new look, with launch day deals for customers, competitions and breakfast on offer.

As well as a smart new branch to visit, roofers will benefit from new and innovative products plus more availability on leading products and enhanced services.

See page 14 for details of upcoming events.

More stores will be emerging transformed in the coming weeks and months including Taunton, Torquay, Chingford, Plymouth, Grimsby and Wigan.

If one of these is your local branch, make sure you follow their Facebook page to find out the Open Day details to take advantage of some great prices.

Step inside - new look branches revealed

"There's a lot more open shop space now, with more stock and a greater variety of products on the shelves. Customers are able to wander round and find what they want more easily, so our makeover's been a resounding success."

Milford Branch Manager, Kyle Bourne

"The layout of the shop works really well now with the space used more effectively and we've had some very positive feedback. It's a totally different environment - better for our customers and for the staff."

Eastbourne Branch Manager, Simon Richards

"The branch refurbishment has significantly improved the day to day functionality of the branch. The new shop area gives us a greater opportunity to showcase the products and services we have to offer."

Woking Hub Manager, Andy Powlesland

WATER MANAGEMENT AT THE ROYAL ALBERT HALL

The Challenge

The Grade One listed Royal Albert Hall is part of the heritage of its surrounding London community. As such any proposed renovation works must meet strict regulations that ensure the preservation and respectful enhancement of the building.

So, when it came to replacing the original water management systems that had been in place since its opening, the challenge was on to find the right manufacturer and installer - ones that would ensure the Hall had the best solution possible that met the stringent requirements.

The Solution

Gutterworks, an Alumasc approved installer, installed Apex Heritage cast iron gutters and downpipes from Alumasc rainwater management systems during an extensive refurbishment.

Alumasc was chosen for its ability to analyse and precisely recreate the original gutter and pipe mouldings, so helping preserve the historic building.



What We Learned

The objective of renovation while retaining as much of the Royal Albert Hall's original character and features as possible was definitely achieved. The diligent care and reverent approach to renovation has ensured another 100 years of smooth-running water management.

When would you choose a Liquid Waterproofing system instead of single ply membrane or hot melt? Here are our suggestions.

1. Refurbishment - when a roof is coming to the end of its life

Liquid applied waterproofing is seamless and fully bonds to the substrate so is ideal to use over existing roofing, including single ply membranes, profiled metal or fibre cement.

2. Repair - where an existing roofing material has failed

In this situation, applying a liquid waterproofing overlay can be a very cost-effective solution, and its bonding characteristics can make it a much more reliable option.



Liquid works well on repair and refurbishment projects where it is difficult to get power onto the roof, or there is limited storage - you only need to bring what's needed that day, without any need for noisy generators or cabling.

3. Complex Roofs - including new build

Cold applied liquid waterproofing is suitable for new projects, especially if there is complex detailing, upstands, edge details, penetrations and terminations. On a roof with a lot of roof-mounted plant, or on balconies where a single ply solution would be difficult to detail neatly, liquid waterproofing makes the job easier.

4. Inverted Roofs

Also consider liquid waterproofing with inverted roof systems where the membrane is laid under the insulation and ballast, including on roof gardens. Some liquid waterproofing is root resistant and FLL approved, so can be used for green roofs.

5. Pitched and flat roof applications

Cold applied liquids work above pitches of 15 degrees and unlike other systems, can also be used below 5 degrees pitch. This makes them ideal for projects with combinations of pitches and also for curved roofs.

SIG Design & Technology has a wide range of liquid waterproofing systems to choose from, with different guarantees and price options. We're quietly confident that we've got at least one system to suit the job you're working on.

- **NEW Hydrostop AH+** has improved levels of robustness, ease-of-use and pricing options with 25- and 15-year warranties.
- **SIGNature PU** offers excellent elasticity and tensile strength with 10- and 20-year guarantees.
- **Vulkem Quick** is hardwearing, making it ideal for high-traffic areas and guaranteed for 20 years.

singleply.co.uk/flat-roofs/

Liquid Waterproofing

- when to use it

High aesthetic down by the waterside

The challenge

When Aquinna Homes received planning permission for an eight-unit development at the Boatyard in Yarnton, near Oxford, it was clear this was no ordinary project. The local authority insisted the housing was varied in style, yet in keeping with local architecture. So, not only did Aquinna Homes need to build eight discreet houses matching the local style, it also had to find a similar selection of roof coverings to keep the planners happy.

The solution

In order to help achieve this patchwork of housing design, Aquinna built two of the properties using BMI's Redland Heathland Autumn tile. David Chidlow, Technical Director at Aquinna Homes, explains, "With each house having to have a different look, we chose the Heathland tile because the colour choice is tried and trusted, and its sanded finish works well with the facing brick we use."

One of the houses features a catslide roof that extends right from the ridge down to just over the rear door, while its other roof extends over a dormer window and a large car port to the front. "In our opinion, Heathland is better than a smooth tile in appearance. The roofs are a prominent expanse of tiling and a major part of the house so you need to make the right aesthetic choice," David concludes.

What we learned

The Heathland tile's irregular sides, varying hanging lengths and subtly textured sand surfaces worked to the developer's advantage. They achieved a bespoke, handmade appearance suitable for a challenging conservation and planning-sensitive environment, while benefiting from modern, machine-made performance.



Easy enough for beginners

THE CHALLENGE

Young homeowners Cal and Clare needed help with their DIY re-roofing project. Neither had any roofing experience, but were determined their first big improvement to the dilapidated wreck of a house they are rebuilding should be an eco-friendly, robust and beautiful slate roof.

THE SOLUTION

IKOslate ticked all the boxes for this project. The light weight - IKOslate is 80% lighter than equivalent natural slate - was good news both for the ageing structure of the house and for the couple shifting packs of slate. The cambered shape of the tile ensures a secure fit and the fact that it is made of 99% recycled material was immediately attractive.

Ease of use, however, was the overriding benefit. Fixed with nails driven through clearly marked positioning points on the tiles and with spacer nibs to ensure a correct laying pattern, IKO was confident this was the right product for the inexperienced couple.

WHAT WE LEARNED

The ease of use is no empty claim. DIY roofers Cal and Clare installed a pretty perfect pitched roof in less than two weeks. IKO is keen to point out that if this quality of finish can be achieved by complete novices, just how quickly could an experienced contractor complete a similar project?





2020 REASSURANCE WITH ONE WARRANTY

More and more roofers are seeing the benefits of ONE Warranty and sharing these advantages with their customers. It's easy to see why ONE Warranty is fast becoming the number one choice for offering protected cover on roofing products.

Exclusively available from SIG Roofing, it offers:

- Cover for flat and pitched roofing work
- A one-stop 15 year warranty for the complete build-up of the roof
- Reassurance for homeowners that the products you use are high quality and built to last
- A free and easy to use package from a single supplier
- Backing by SIG - a FTSE 250 plc.

REGISTRATION IS EASY

Simply complete the form online at sigroofing.co.uk/onestarranty/registration/. Your ONE Warranty welcome pack and membership number will be posted to you.

NEXT STEPS

Purchase the ONE Warranty products from SIG Roofing and install them to meet the standards of all current codes of practice and legislation.

Register the completed job online to apply for a warranty, then as soon as the purchases are verified a certificate will be sent to both you and the homeowner.

How to choose a quality, compliant, ventilated ridge

In the winter it pays to keep things as simple and reliable as possible. This is particularly true with ventilated ridge and hip systems which can take a pounding, especially at this time of year.

If the above scenario sounds familiar to you, then Danelaw's pioneering CON6+ system could be just the thing you need to achieve a quality, compliant ventilated ridge.

The CON6+ continues Danelaw's pioneering reputation and is one of the few ventilated dry ridge and hip systems that is a complete, universal kit. As it addresses every common roof configuration, using CON6+ means you only need one ventilated ridge and hip system - perfect for simplifying your stock and site installation.

CON6+ also features a patented gasket providing continuous, integrated water channels and a self-sealing detail for improved long term reliability. The system is guaranteed for 15 years.

With broader corrugations and a wider butyl adhesion strip to the ventilated Rollflex membrane, CON6+ can be quickly and securely fitted to all roof pitches (if used with the appropriate ridge tiles), whether warm or cold construction, without any special tools.

The central Rollflex component features a corrugated aluminium strip that can be perfectly moulded to the tile profile for a weathertight seal. This still delivers a minimum 5000mm² airflow/linear metre, as required by BS5250.

CON6+ also features a unique, universal jointing gasket for added flexibility and compatibility, even accommodating baby ridge tiles and capped angle ridge and hip tiles. Check out the installation video online:

hambleside-danelaw.co.uk/pitched-roofing/products/ridge-hip-verge/



UPCOMING OPEN DAYS

NEWLY REFURBISHED BRANCH LAUNCHES
ALL WELCOME FROM 7.30 AM

TORQUAY WEDNESDAY, 18TH MARCH
CREWE WEDNESDAY, 25TH MARCH
TAUNTON THURSDAY, 23RD APRIL

READ MORE ABOUT OUR REFURBISHMENTS ON PAGE 6



In partnership with the Salvation Army, staff at Crewe branch hosted the charity's Christmas Present Appeal. Dozens of toys, books and gifts donated by customers, suppliers and members of the public were wrapped and distributed to disadvantaged local children.



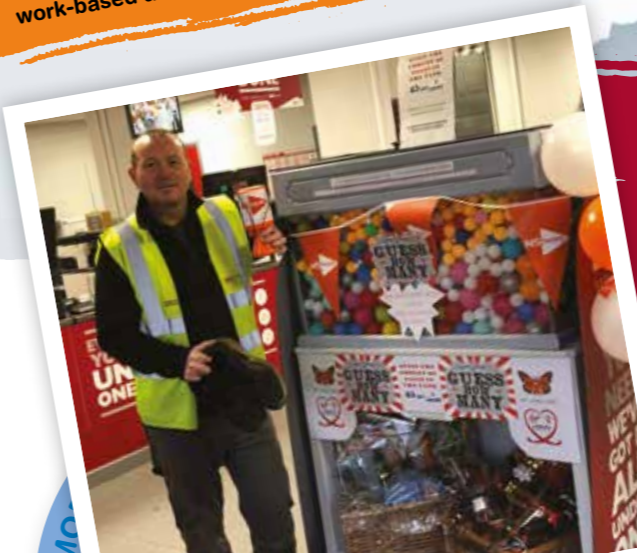
Concerned at the prevalence of suicide in construction*, Ian Dryden from SIG Design & Technology conquered Mt. Kilimanjaro recently, raising more than £7,000 for Samaritans who supported him through mental health battles. To donate visit: justgiving.com/fundraising/ian-dryden2.

*Skilled specialists in the construction and building trades are 10 times more likely to die from suicide than a work-based accident - Office for National Statistics data.

St Ives branch is supporting the Home First homeless project near Cambridge, supplying substantially discounted FIX-R EPDM for six new modular homes by social enterprise New Meaning.



Steve Bussey, Transport Manager at Woking branch is running the London Marathon in aid of MS Society. He's raised £1,000 so far from customers and colleagues through events and competitions such as 'Guess the number of balls in the tank.' Donations to Justgiving.com/fundraising/MandieSteve.



WHICH PRODUCTS CAN I USE?

ONE Warranty includes a range of qualifying products from leading manufacturers including FIX-R, TIL-R, SIGnature, SmartPly, ALM, IKO, Klobber, SR Timber, Russell, Wienerberger and Sandtoft. For a full list of products, ask in your local branch or visit sigroofing.co.uk.



SCOTLAND

| | | |
|-----------|----------|--------------|
| Aberdeen | AB16 5UU | 01224 692000 |
| Ayr | KA8 8BL | 01292 262885 |
| Broxburn | EH52 5NN | 01506 857613 |
| Dundee | DD2 3QQ | 01382 833011 |
| Edinburgh | EH6 7LF | 01315 542554 |
| Glasgow | G71 6LL | 01698 817428 |
| Inverness | IV1 1SY | 01463 250318 |
| Kirkcaldy | KY1 2YX | 01592 654913 |
| Linwood | PA3 3BQ | 01505 321122 |
| Melrose | TD6 ORS | 01835 823640 |

NORTH WEST

| | | |
|------------|----------|---------------|
| Blackpool | FY3 7UN | 01253 398376 |
| Bolton | BL3 2NH | 01204 523336 |
| Crewe | CW2 8UY | 01270 251 000 |
| Leyland | PR26 7QL | 01772 453939 |
| Liverpool | L9 7ET | 0151 5212100 |
| Manchester | M34 5LR | 0161 3203456 |
| Warrington | WA4 4EZ | 01928 796 100 |
| Wigan | WN3 4BT | 01942 615030 |

TYNE AND TEES

| | | |
|---------------|---------|--------------|
| Gateshead | NE8 3AD | 01914 779474 |
| Middlesbrough | TS2 1DF | 01642 242753 |

YORKSHIRE

| | | |
|------------|----------|--------------|
| Bradford | BD3 9HB | 01274 392433 |
| Grimsby | DN31 2SG | 01472 245667 |
| Hull | HU4 6PA | 01482 574577 |
| Leeds | LS12 6AB | 0113 2631263 |
| Leeds | LS9 0PF | 0113 2351441 |
| Rotherham | S60 1DA | 01709 835500 |
| Scunthorpe | DN16 1DQ | 01724 854444 |
| York | YO30 4UU | 01904 476319 |

MIDLANDS

| | | |
|------------|----------|--------------|
| Birmingham | B11 2FE | 01217 081515 |
| Birmingham | B19 1ED | 01215 239143 |
| Coventry | CV6 6FG | 02476 688754 |
| Derby | DE24 8HL | 01332 349155 |
| Dudley | DY2 0RL | 01384 472420 |
| Leicester | LE18 4TA | 01162 785262 |
| Newark | NG24 2EQ | 01636 611880 |
| Nottingham | NG7 2NN | 01159 851400 |
| Stoke | ST4 2NL | 01782 280567 |
| Telford | TF1 5ST | 01952 641161 |

WEST

| | | |
|------------|----------|---------------|
| Bath | BA1 3EN | 01225 483828 |
| Bristol | BS2 0UZ | 01179 710085 |
| Bristol | BS5 9RD | 01179 412412 |
| Bristol | BS3 2TN | 01179 663072 |
| Gloucester | GL4 3SJ | 01452 521 347 |
| Hereford | HR2 6JT | 01432 273084 |
| Oxford | OX2 0ES | 01865 790303 |
| Reading | RG30 4BJ | 01189 455454 |
| Swindon | SN2 8XA | 01793 613339 |

WALES

| | | |
|---------|----------|--------------|
| Cardiff | CF24 5HB | 02920 483939 |
| Swansea | SA5 7LF | 01792 790272 |

ANGLIA

| | | |
|----------------|----------|---------------|
| Bedford | MK41 9QG | 01234 325283 |
| Cambridge | CB22 7QP | 01223 872260 |
| Colchester | CO2 8JX | 01206 877460 |
| Great Yarmouth | NR31 0LY | 01493 659991 |
| High Wycombe | HP12 3RJ | 01494 450079 |
| Ipswich | IP1 5LU | 01473 749621 |
| Kings Langley | WD4 8JU | 01923 269983 |
| Kings Lynn | PE34 3AJ | 01553 764202 |
| Northampton | NN5 5JF | 01604 765684 |
| Norwich | NR3 3ST | 01603 487860 |
| Peterborough | PE1 5YB | 01733 345004 |
| Rayleigh | SS6 7XF | 01268 798 999 |
| Southend | SS2 5QW | 01702 613 181 |
| St Ives | PE27 3YJ | 01480 467776 |
| Waltham Cross | EN8 7DZ | 01992 624938 |

LONDON

| | | |
|--------------|----------|---------------|
| Cheam | SM3 9AG | 020 8337 9455 |
| Chingford | E4 7HZ | 020 8559 4334 |
| Croydon | CR0 2BD | 020 8686 6911 |
| Croydon | CR0 4YZ | 020 8689 0481 |
| Kentish Town | NW5 3EW | 020 7485 5550 |
| Park Royal | NW10 7UL | 020 8507 4380 |
| Romford | RM7 0HL | 01708 754022 |
| Romford | RM3 8TS | 01708 377666 |
| Slough | SL1 4BG | 01753 570526 |
| Stratford | E15 2RW | 020 8536 5400 |
| Tottenham | N17 8HJ | 020 8808 6816 |

SOUTH EAST

| | | |
|-----------------|----------|---------------|
| Finchampstead | RG40 4RB | 01189 733788 |
| Folkestone | CT19 5EY | 01303 226888 |
| Gravesend | DA12 2PS | 01474 532999 |
| Hanwell | W7 2QD | 020 8571 6555 |
| Hastings | TN38 9ST | 01424 853099 |
| Horsham | RH12 2NW | 01403 270640 |
| Hove | BN3 7ES | 01273 328640 |
| Leatherhead | KT22 7LF | 01372 361600 |
| Lewes | BN7 2BQ | 01273 488888 |
| Maidstone | ME15 9NL | 01622 843399 |
| Milford | GU8 5BB | 01483 425828 |
| Ramsgate | CT11 7QE | 01843 592772 |
| Sidcup | DA14 6QF | 0208 302 5451 |
| Sittingbourne | ME9 7NU | 01795 843967 |
| Tunbridge Wells | TN2 3DY | 01892 515599 |
| Weybridge | KT15 2SD | 01932 850500 |
| Woking | GU21 3BA | 01483 215100 |
| Worthing | BN14 8NW | 01903 201013 |

SOUTH COAST

| | | |
|-----------------|----------|--------------|
| Bishops Waltham | S032 1BH | 01489 896544 |
| Bournemouth | BH12 4BJ | 01202 731867 |
| Eastbourne | BN23 6QN | 01323 500458 |
| Poole | BH15 4BN | 01202 682491 |
| Portsmouth | PO3 5AY | 02392 690214 |
| Southampton | SO15 0LG | 02380 365555 |
| Waterlooville | PO7 6QX | 02392 258344 |

SOUTH WEST

| | | |
|----------|---------|--------------|
| Exeter | EX2 8PY | 01392 250323 |
| Newquay | TR7 2SX | 01637 852660 |
| Plymouth | PL1 4LL | 01752 509538 |
| Taunton | TA1 5LY | 01823 323888 |
| Torquay | TQ2 7BD | 01803 613212 |

OVER 100 BRANCHES NATIONWIDE OFFERING

- Over 40,000 roofing products
- Supply of leading brands
- Delivering the products you need, when you need them - nationwide
- Dedicated Industrial Roofing team
- ONE Warranty accredited contractor scheme for flat and pitched roofing